

The background features a detailed, semi-circular watch dial with various markings and numbers. A prominent red dot with a white arrow pointing downwards is located in the upper right quadrant. The word 'baty' is written in a white, lowercase, sans-serif font, positioned to the left of the red dot.

baty

10
20

30 planoclean/
granite

40



Baty International has been in business since 1932. Originally, a manufacturer of high precision dial indicators and other associated instruments such as cylinder bore gauges.

Baty soon diversified into non-contact measurement with Optical Profile Projectors and the Baty 'Shadograph' series has since become an industry standard in profile projectors. These products are still manufactured in Sussex in accordance with ISO 9001:2000.

For decades Baty has employed a team of Field Based Service Engineers. Today, our service department is the largest ISO 9001:2000 accredited Projector Service Organisation in the UK offering on-site Service, Training, Retrofits, and Repair for all makes of Profile Projector and Vision Systems.

In keeping with its gauging roots, Baty acquired John Bull and British Indicators, extending its gauging range to include calipers and flexible fixturing.

The range was then completed in the eighties when our first camera based Video Inspectors were developed. Video Edge Detection (VED) was soon added giving rise to increased accuracy, repeatability and measuring speed.

Now all our vision systems offer the best of both worlds with the combination of non-contact (VED) and contact measurement using Renishaw's extensive touch probe range.

Today, Baty is an ISO 9001:2000 accredited company that offers a range of Metrology Instruments from Hand Tools to Vision Systems, offering measuring solutions for almost every measurement application in modern manufacturing and now, we've put them together into one catalogue for your convenience.

So, whether you need a digital caliper or a full CNC multi-sensing Vision system...

...it's here.

We look forward to talking to you.

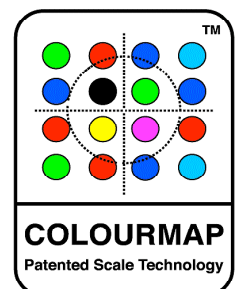
Geoff Jackson
Managing Director

Tel +44 (0) 1444 235621

Fax +44 (0) 1444 246985

Email: sales@baty.co.uk

Website: www.baty.co.uk



T: 01444 235621 E: sales@baty.co.uk www.baty.co.uk



| Planoclean | | |
|----------------------------|-------|-------|
| 1 Min | 3 Min | 5 Min |
| | | |
| Soap Solution | | |
| 1 Min | 3 Min | 5 Min |
| | | |
| Washing-up Liquid Solution | | |
| 1 Min | 3 Min | 5 Min |
| | | |
| Brand X | | |
| 1 Min | 3 Min | 5 Min |
| | | |
| Brand Y | | |
| 1 Min | 3 Min | 5 Min |
| | | |

It was in the process of conducting measurement services with our customers, that we identified the need for a product like Planoclean™. There were no alternatives on the market that could satisfy our high demands on quality as well as environmental consideration.

Environmental considerations are becoming increasingly important to companies. In today's industry it is not enough for a cleaning product to clean. It should preferably be environmentally friendly as well, and Planoclean™ was developed with this taken into consideration.

The product is designed not only to make the surface plates as clean as possible, but also to be as gentle as possible to our environment.

In order to be able to use the surface plate as a reference surface whilst conducting measurements, it needs to be calibrated at regular intervals. Just as important though, is to keep dirt and grease off the surface plate. Otherwise impurities in the plate will disrupt the results where the surface plate is used as a reference for measurements.

It was in order to live up to the high standards for purity required for the surface plates, that Planoclean™ was developed. The product swiftly and conveniently cleans the surface plate, thus ensuring that impurities will not disrupt the measurements.

Ever increasing demands on higher precision in manufacturing leads to higher demand on correct references and measurements.

An increased focus on precision measurement has the potential of preventing serious errors in production and thus, reducing the costs of manufacturing.

But in order to generate cost savings, it is vital to use correct references when conducting measurements. The reference often used, is the surface plate.

Siemens Industrial Turbomachinery AB conducted a product test. Planoclean™ was compared with two competing brands and solutions of soap and washing-up liquid. The fluids were applied to a surface plate and thereafter wiped off, after one, three and five minutes respectively with a high absorbent paper. The paper was then photographed. The results are presented in the table on the right.

Baty feels that Planoclean™ satisfies their high demand. "Our customers expect the highest possible quality in everything that we do. If we are to satisfy their demands for precision, it is essential that the measurement results are correct because all production is based on them. Without a clean surface plate, the measurement results will inevitably become disrupted since the plate is a reference plate for the measurements".

A safety data sheet with more detailed information on safety and environmental issues is supplied with all orders of Planoclean™.

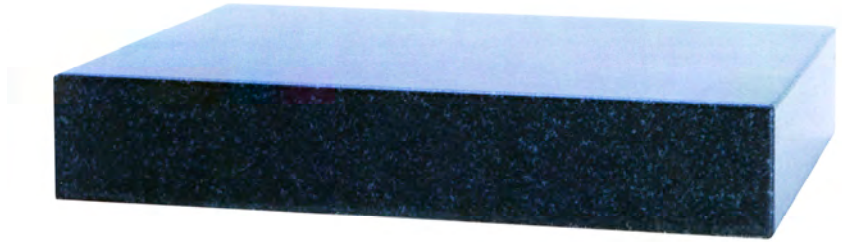


| | |
|------------------|---|
| PB-Bottle | Planoclean bottle |
| PB-Box | Planoclean – Box 14 bottles |
| PB-Set | Planoclean set 3-bottles, 20 cloths, wall mount |
| PB-Cloth | Drying Cloths 100 pieces |

GRANITE SURFACE PLATES

All granite surface plates are manufactured to DIN876-83 and supplied with a calibration certificate.

- Grade '00' accuracy is $(2+I / 500)$
Where I = length in mm.



| Model | Surface Plate Dimensions (mm) | Net Weight (kg) | C/W Stand Y / N |
|--------|-------------------------------|-----------------|-----------------|
| GSP-1 | 300 x 200 x 50 | 9.4 | N |
| GSP-2 | 300 x 300 x 70 | 20.0 | N |
| GSP-3 | 300 x 450 x 80 | 33.5 | N |
| GSP-4 | 400 x 400 x 100 | 50.0 | N |
| GSP-5 | 600 x 450 x 100 | 84.0 | N |
| GSP-6 | 630 x 400 x 100 | 80.0 | N |
| GSP-7 | 630 x 630 x 130 | 160.0 | N |
| GSP-8 | 750 x 750 x 130 | 152.0 | N* |
| GSP-9 | 800 x 500 x 130 | 162.0 | N* |
| GSP-10 | 600 x 900 x 130 | 218.0 | N* |

*stand available as an option

GRANITE SURFACE TABLES

All granite surface tables are manufactured to DIN 876-83 and supplied with a steel stand with adjustable levelling and a calibration certificate.

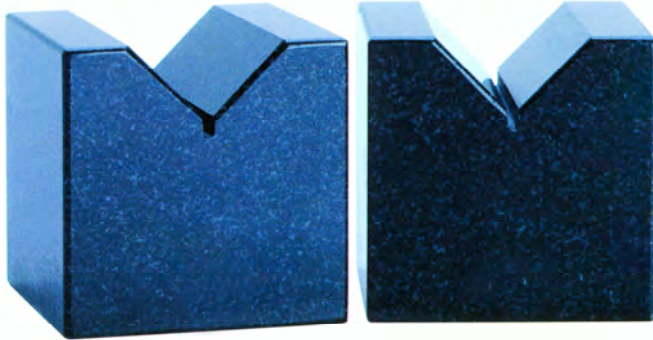


| Model | Surface Plate Dimensions (mm) | Net Weight (kg) | C/W Stand Y / N | Model | Surface Plate Dimensions (mm) | Net Weight (kg) | C/W Stand Y / N |
|-------|-------------------------------|-----------------|-----------------|--------|-------------------------------|-----------------|-----------------|
| GST-1 | 600 x 900 x 130 | 218.0 | Y | GST-9 | 2000 x 1000 x 200 | 1240.0 | Y |
| GST-2 | 1000 x 630 x 150 | 293.0 | Y | GST-10 | 2000 x 1500 x 200 | 1860.0 | Y |
| GST-3 | 1000 x 750 x 150 | 350.0 | Y | GST-11 | 2000 x 1600 x 250 | 2480.0 | Y |
| GST-4 | 1000 x 1000 x 150 | 465.0 | Y | GST-12 | 2500 x 1600 x 300 | 3720.0 | Y |
| GST-5 | 1200 x 800 x 150 | 447.0 | Y | GST-13 | 3000 x 1000 x 300 | 2790.0 | Y |
| GST-6 | 1200 x 900 x 150 | 503.0 | Y | GST-14 | 3000 x 2000 x 400 | 7440.0 | Y |
| GST-7 | 1500 x 1000 x 200 | 930.0 | Y | GST-15 | 4000 x 2000 x 500 | 12400.0 | Y |
| GST-8 | 1600 x 1000 x 200 | 993.0 | Y | | | | |

GRANITE VEE BLOCKS

Available in three sizes. Each set is a pair of blocks made from high density black granite.

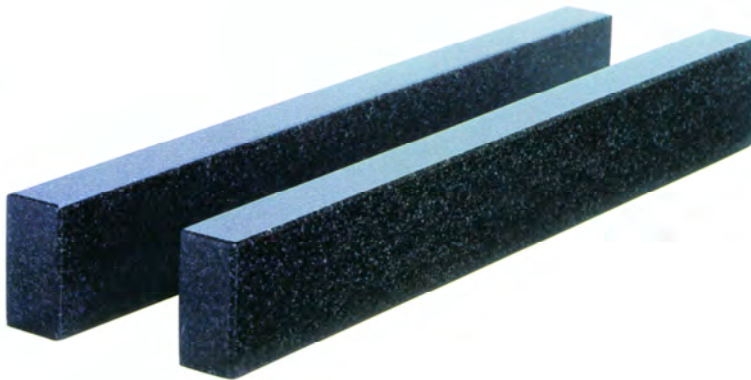
- Anti magnetic
- Corrosion resistant
- High wear resistance



| Model | Size | Squareness | Parallelism |
|-------|----------------|------------|-------------|
| GVB-1 | 63 x 63 x 90 | 4 microns | 4 microns |
| GVB-2 | 100 x 100 x 90 | 4 microns | 4 microns |
| GVB-3 | 160 x 160 x 90 | 5 microns | 5 microns |

GRANITE PARALLELS

Available in five sizes. Each set is a pair. Made from high density black granite. (Properties as above).



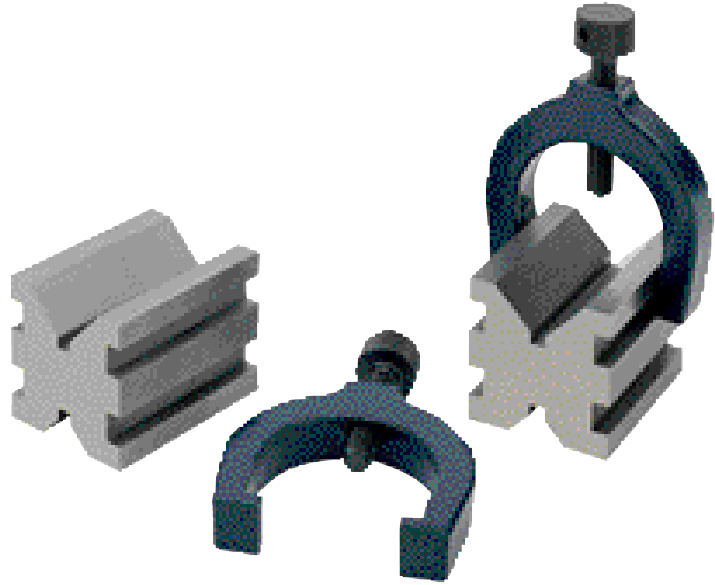
| Model | Size | Parallelism | Flatness |
|--------|----------------|-------------|-------------|
| GPAR-1 | 100 x 40 x 16 | 1.5 microns | 1.5 microns |
| GPAR-2 | 160 x 40 x 25 | 1.5 microns | 1.5 microns |
| GPAR-3 | 250 x 40 x 25 | 2 microns | 2 microns |
| GPAR-4 | 400 x 63 x 40 | 4 microns | 4 microns |
| GPAR-5 | 630 x 100 x 63 | 6 microns | 6 microns |

VEE BLOCKS AND CLAMPS

Features

Standard: BS3731, Grade B

- Manufactured from case hardened and ground mild steel
- Supplied in matched pairs only
- Two malleable iron clamps with steel screws supplied with each pair of blocks

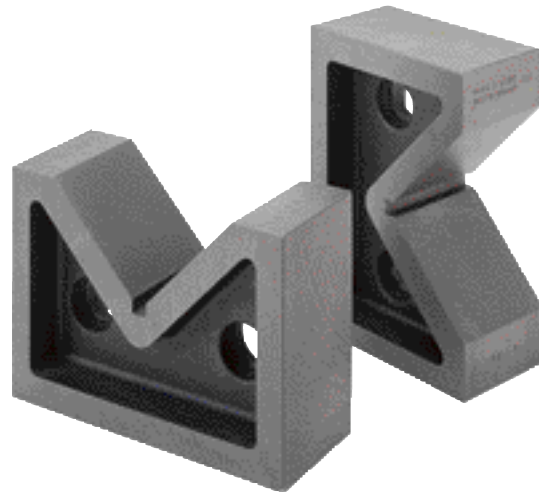


| Model | Capacity | Size | Accuracy |
|-------|----------|----------------|----------|
| SVB-1 | 25mm | 32 x 42 x 32mm | 0.01mm |

CAST IRON VEE BLOCKS

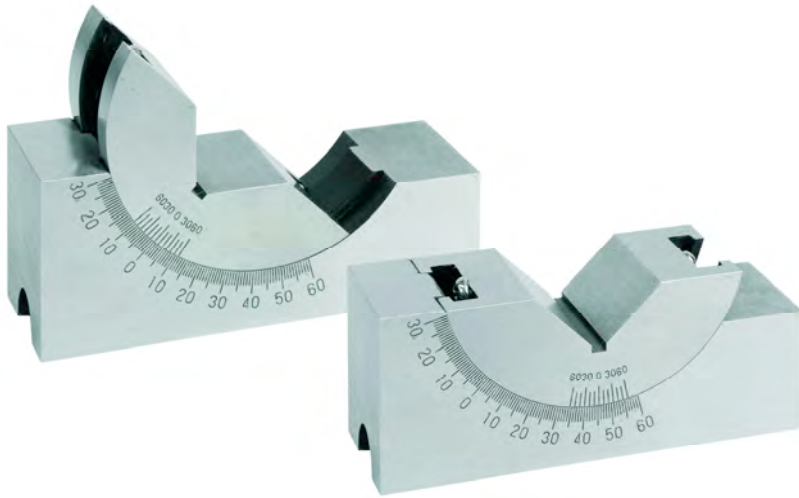
Features

- Supplied in matched and numbered pairs only
- Manufactured from close grained cast iron
- Ground faces



| Model | Capacity | Width | Length | Height | Accuracy |
|-------|----------|-------|--------|--------|----------|
| IVB-1 | 63mm | 80mm | 35mm | 60mm | 0.04mm |
| IVB-2 | 80mm | 100mm | 40mm | 75mm | 0.04mm |
| IVB-3 | 100mm | 130mm | 45mm | 90mm | 0.05mm |
| IVB-4 | 125mm | 150mm | 50mm | 100mm | 0.05mm |
| IVB-5 | 160mm | 180mm | 60mm | 130mm | 0.06mm |
| IVB-6 | 200mm | 220mm | 70mm | 160mm | 0.06mm |

ADJUSTABLE ANGLE VEE BLOCKS

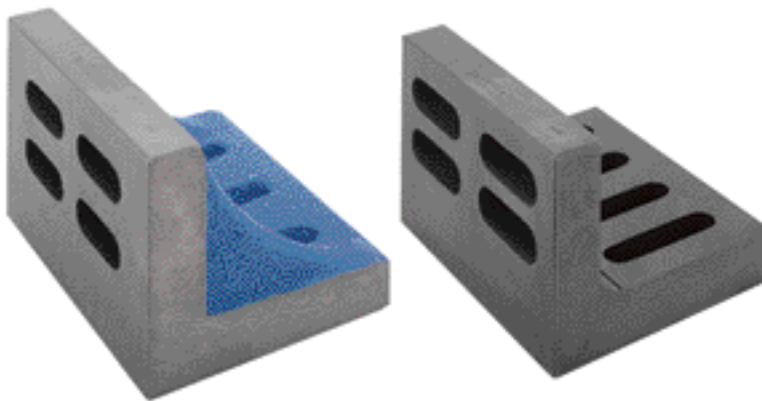


Features

- High precision model adjustable from 0 up to +60° and -30°
- Accuracy of angle 0.01°
- Made of hardened micro-lapped chrome-steel
- Robust design which can be used on workshop machinery or for measuring purposes
- 3 different sizes

| Model | Dimensions | Weight |
|---------|-----------------|--------|
| SVB-1-A | 32 x 25 x 75mm | 0.5kg |
| SVB-2-A | 47 x 30 x 102mm | 1.0kg |
| SVB-3-A | 47 x 46 x 102mm | 1.3kg |

ANGLE PLATES



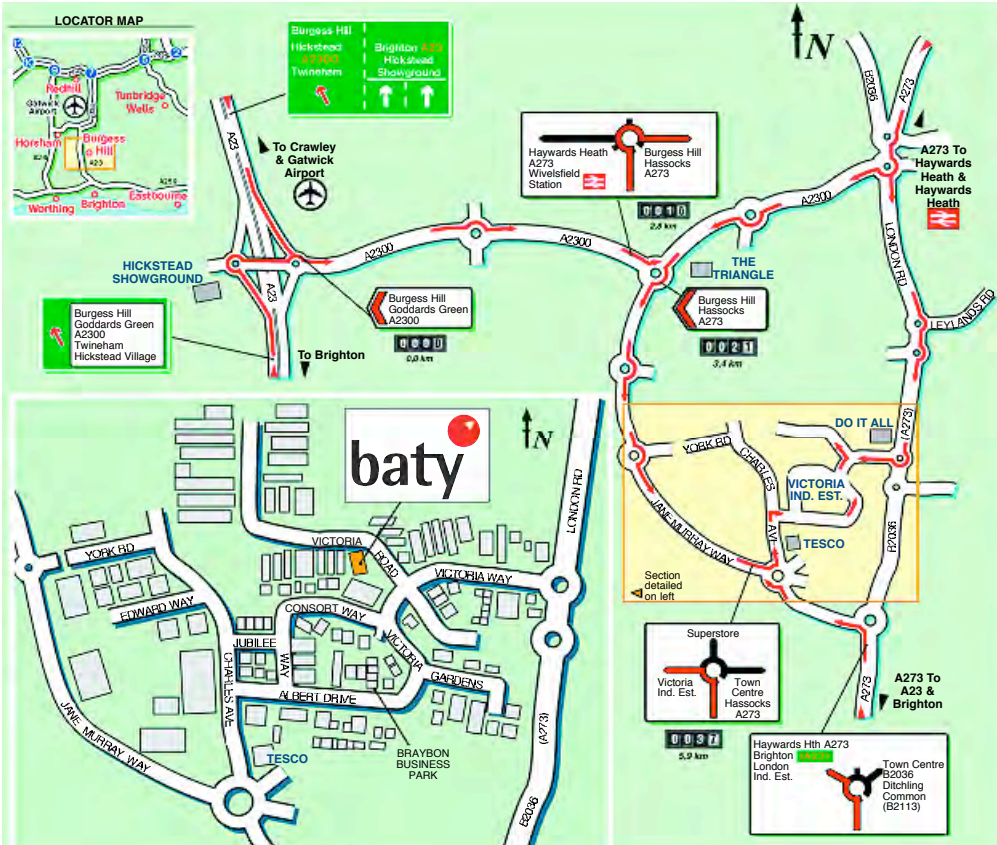
Features

Standard: BS5535, Grade B

- Manufactured from close grained cast iron
- Heat stabilised to prevent distortion
- Ground to tolerance on all four edges and two faces

| Model | Type | Length | Width | Height | Model | Type | Length | Width | Height |
|-------|--------|--------|-------|--------|-------|----------|--------|-------|--------|
| AP1-W | Webbed | 100mm | 60mm | 80mm | AP-1 | Open end | 125mm | 80mm | 100mm |
| AP2-W | Webbed | 125mm | 80mm | 100mm | AP-2 | Open end | 160mm | 100mm | 125mm |
| AP3-W | Webbed | 160mm | 100mm | 125mm | AP-3 | Open end | 200mm | 125mm | 160mm |
| AP4-W | Webbed | 200mm | 125mm | 160mm | AP-4 | Open end | 250mm | 160mm | 200mm |
| AP5-W | Webbed | 250mm | 160mm | 200mm | AP-5 | Open end | 315mm | 200mm | 250mm |
| AP6-W | Webbed | 315mm | 200mm | 250mm | | | | | |

How to find us...



Baty International

Victoria Road, Burgess Hill, West Sussex RH15 9LR

Tel +44 (0) 1444 235621

Fax +44 (0) 1444 246985

Email: sales@baty.co.uk

Website: www.baty.co.uk

Distributed by:



Baty International

Victoria Road, Burgess Hill,

West Sussex RH15 9LR

Tel +44 (0) 1444 235621

Fax +44 (0) 1444 246985

Email: sales@baty.co.uk

Website: www.baty.co.uk



Official sponsors of **HAWK** **Kawasaki** British Superbike Team